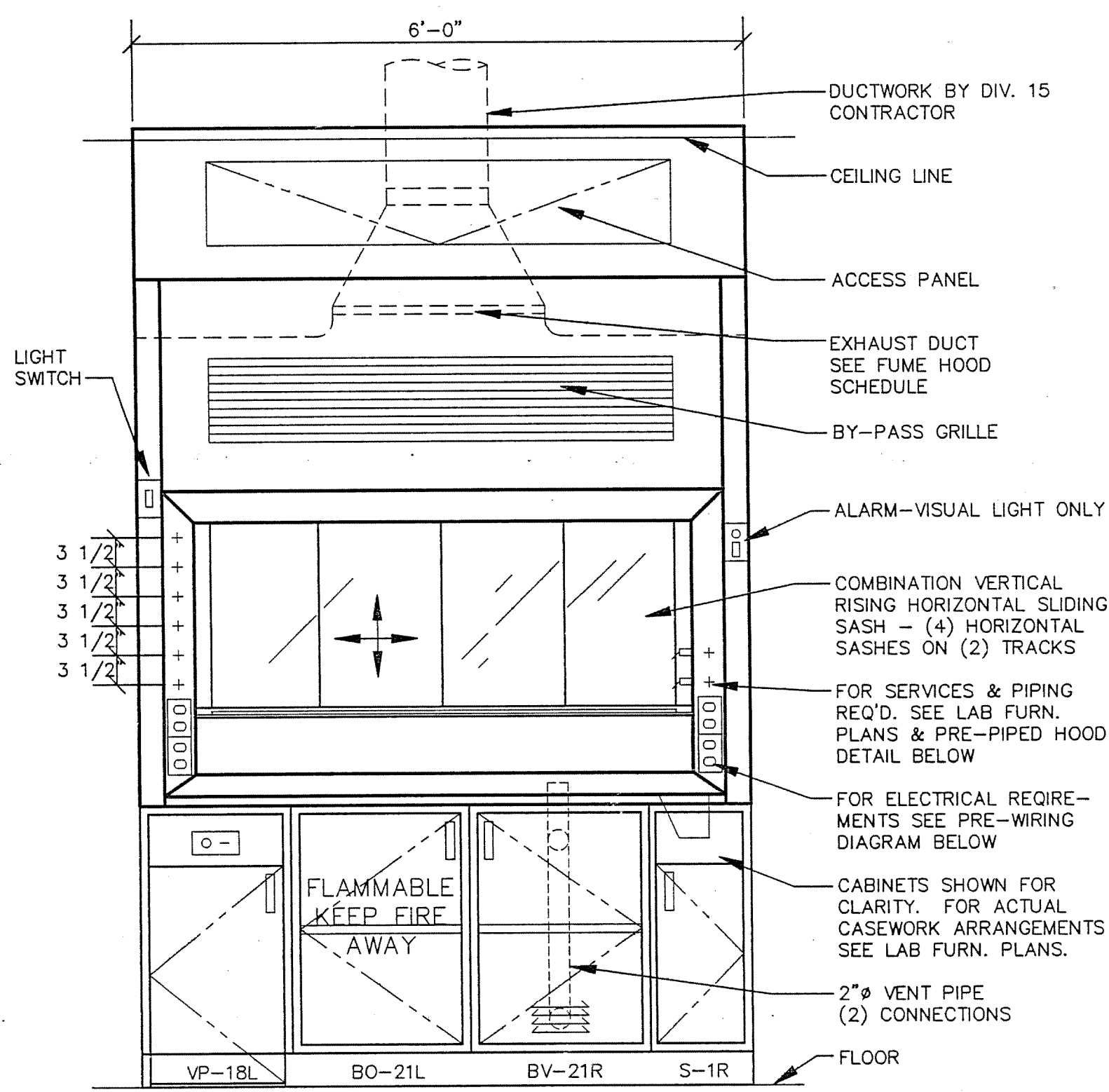


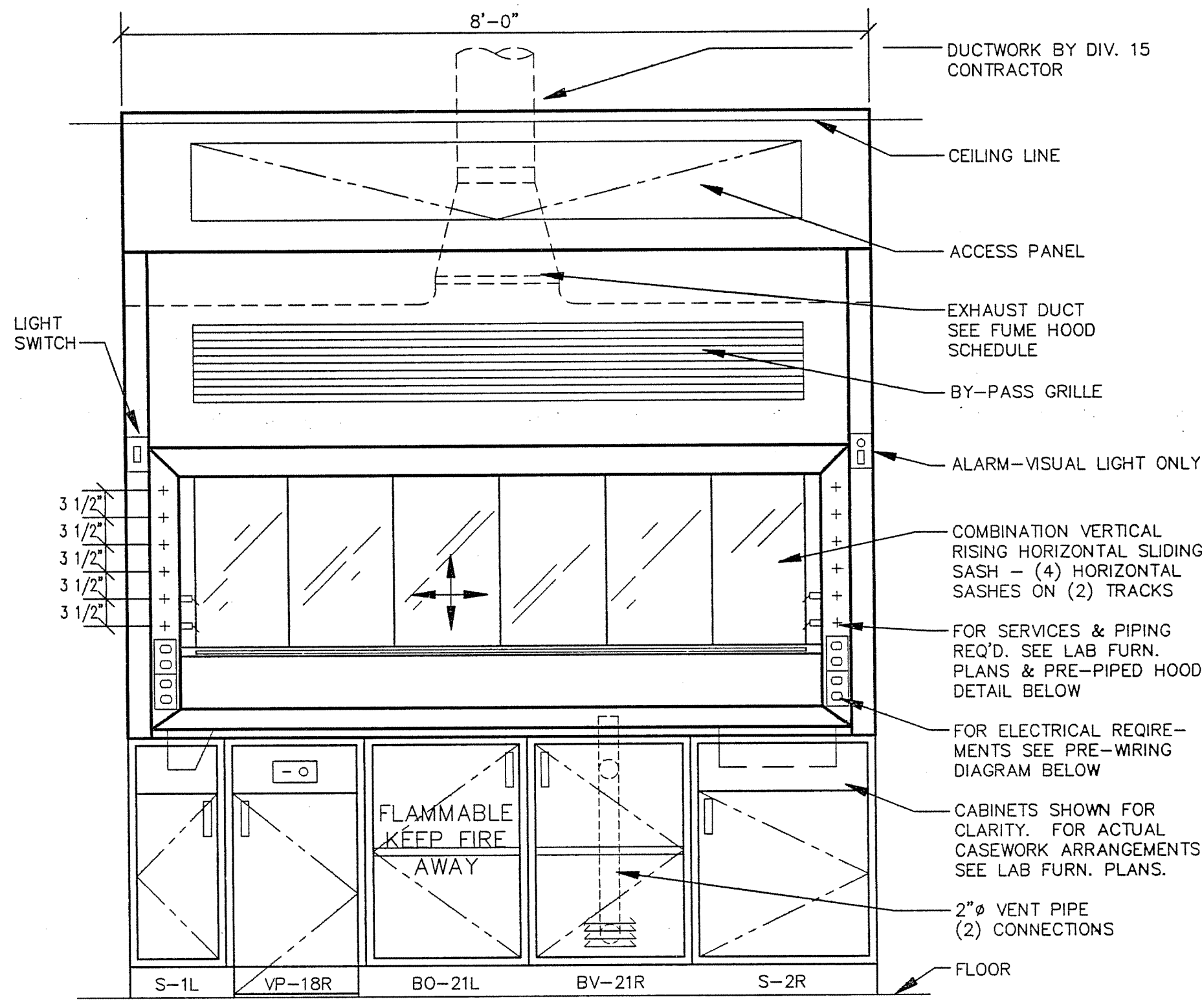
FRONT ELEVATION

1 5'-0" CHEMICAL FUME HOOD
SCALE: 3/4" = 1'-0"



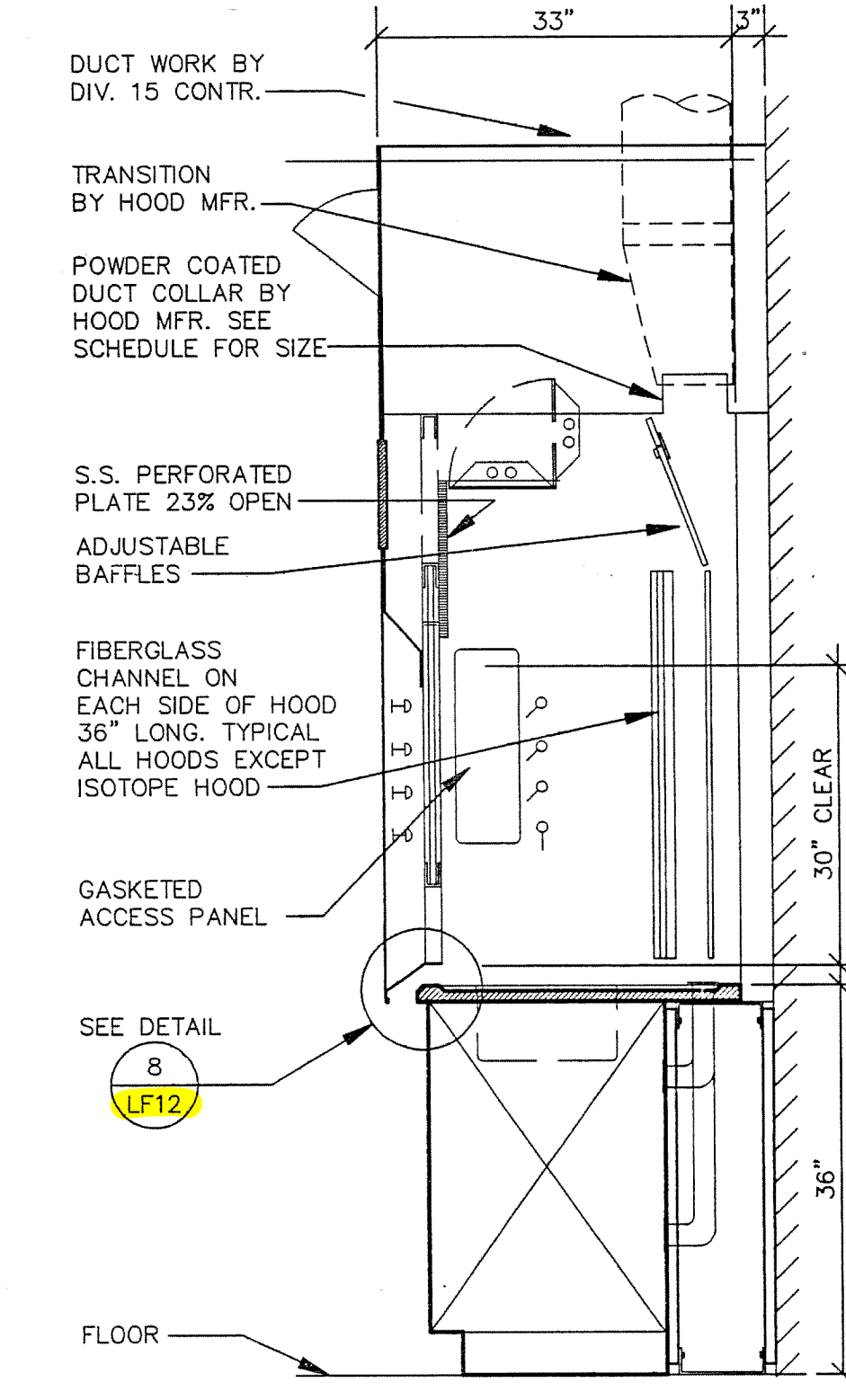
FRONT ELEVATION

2 6'-0" CHEMICAL FUME HOOD
SCALE: 3/4" = 1'-0"



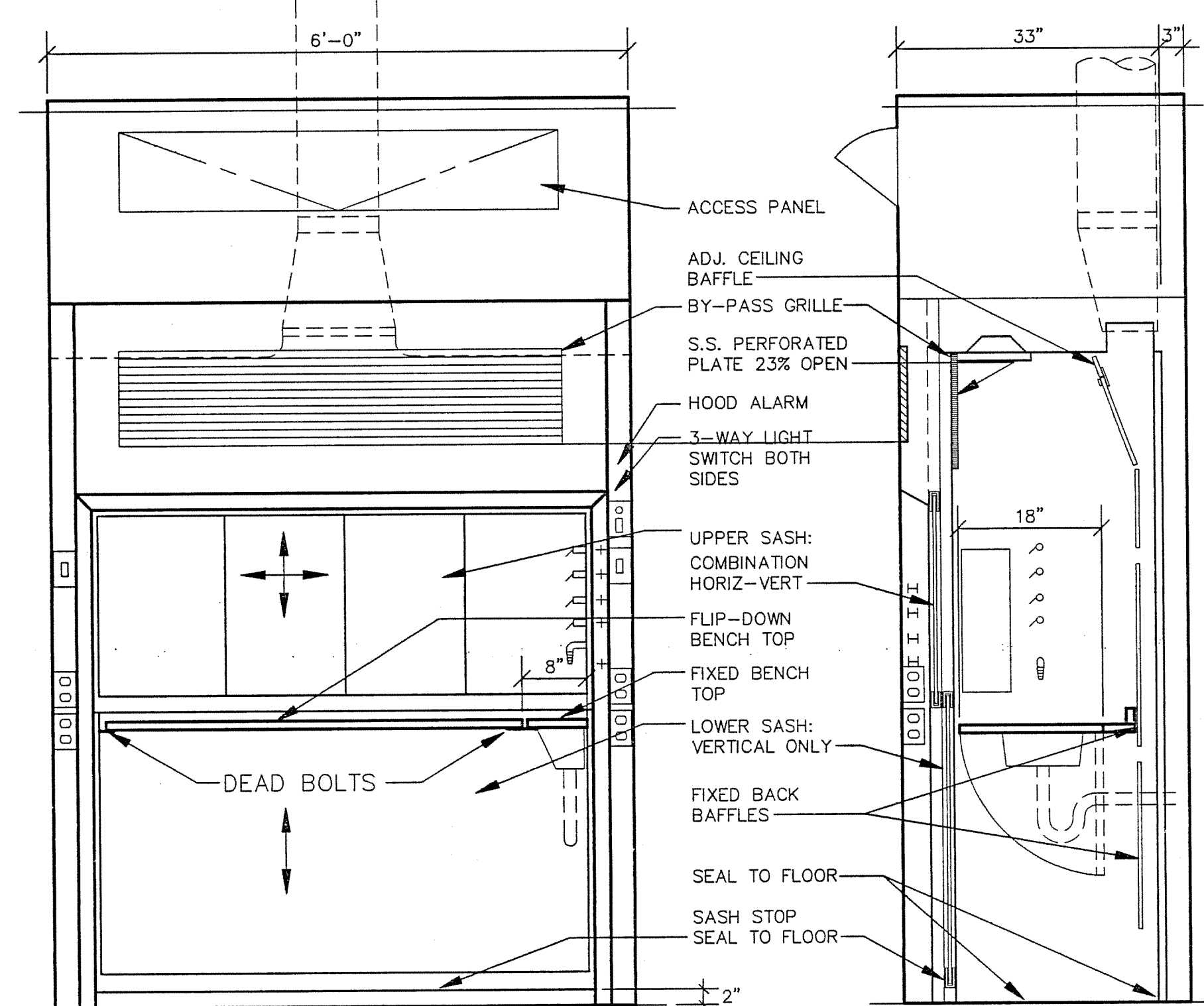
FRONT ELEVATION

3 8'-0" CHEMICAL FUME HOOD
SCALE: 3/4" = 1'-0"



SECTION

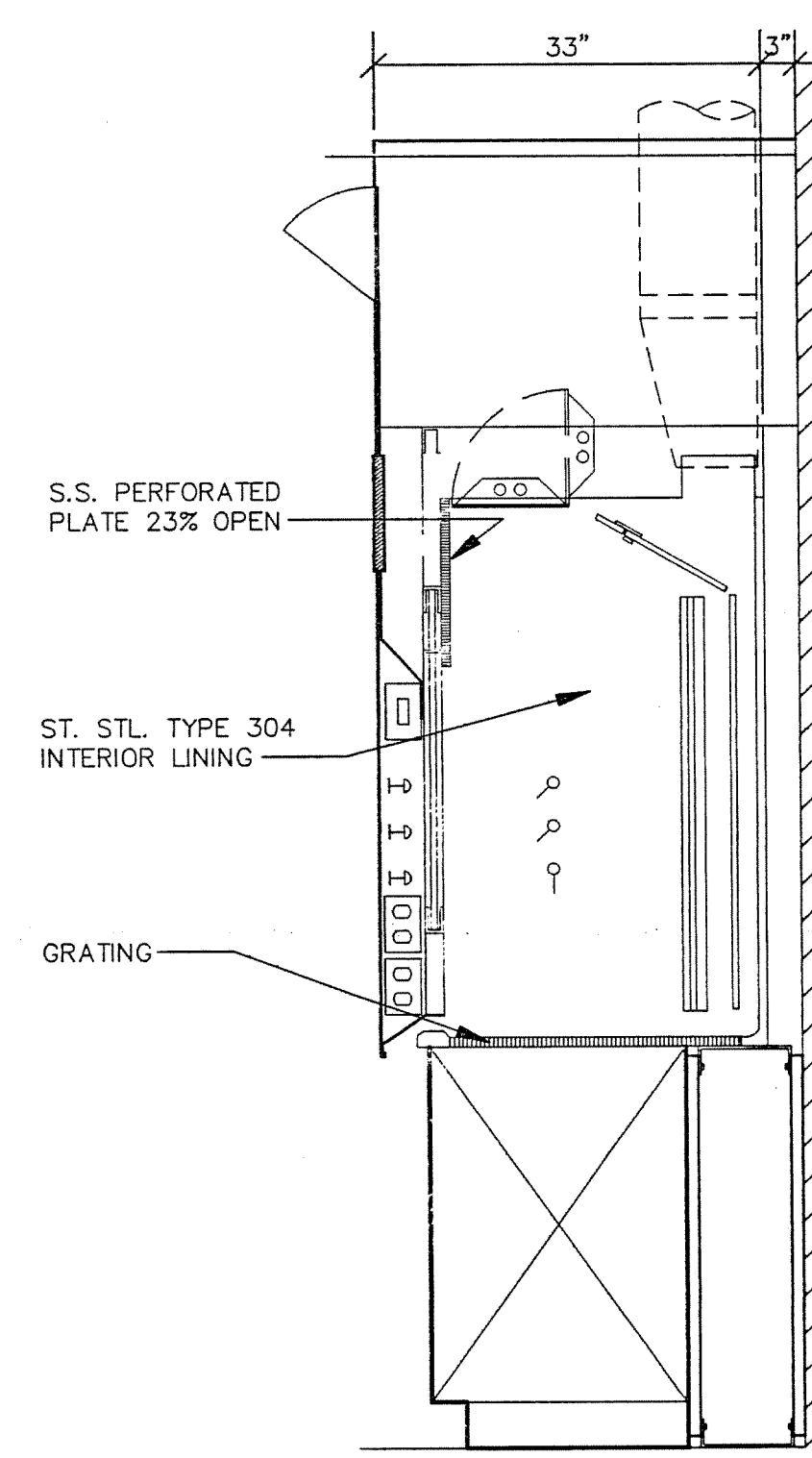
4 TYPICAL FUME HOOD SECTION
SCALE: 3/4" = 1'-0"



FRONT ELEVATION

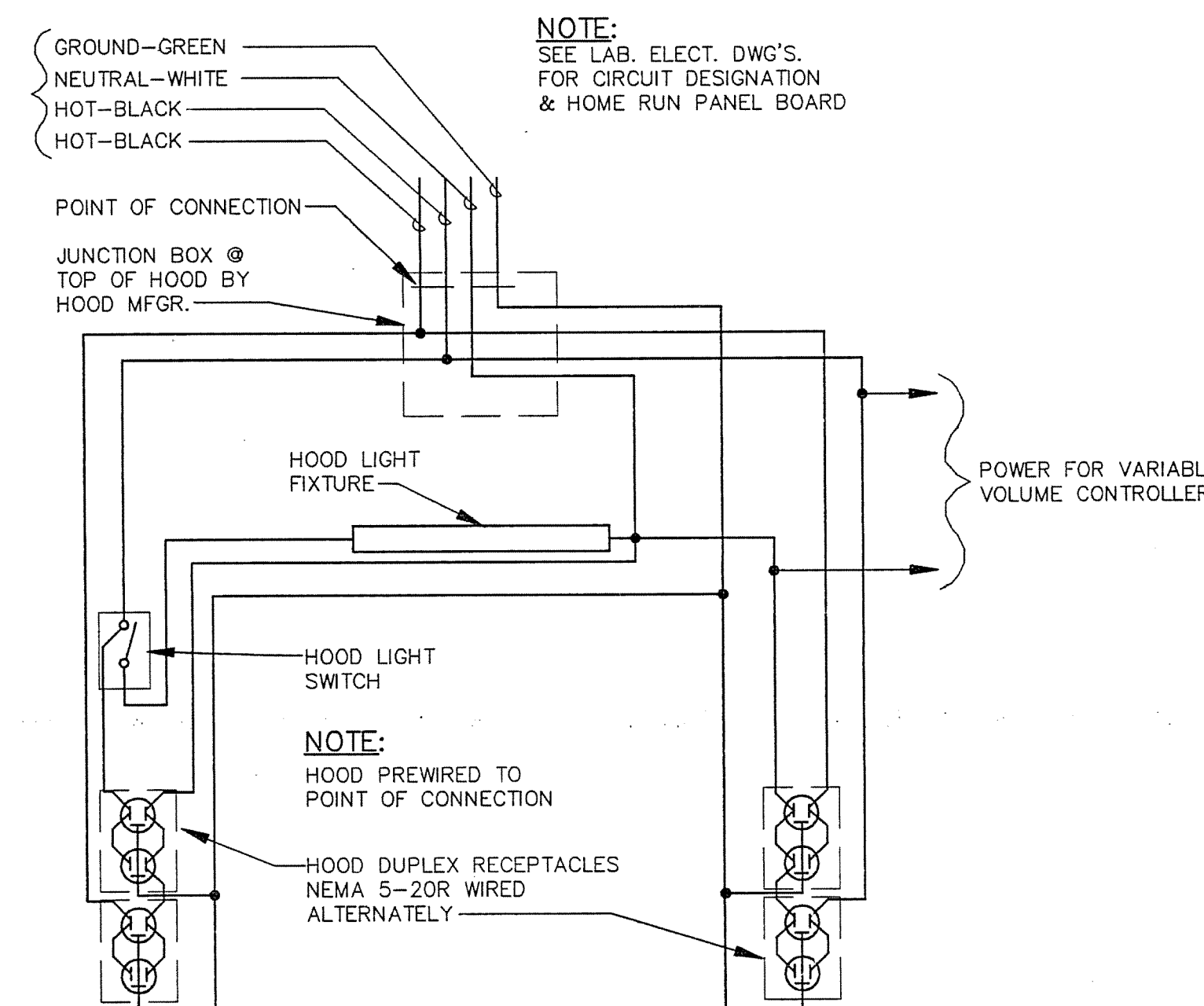
SECTION

5 6'-0" WALK-IN HOOD
SCALE: 3/4" = 1'-0"

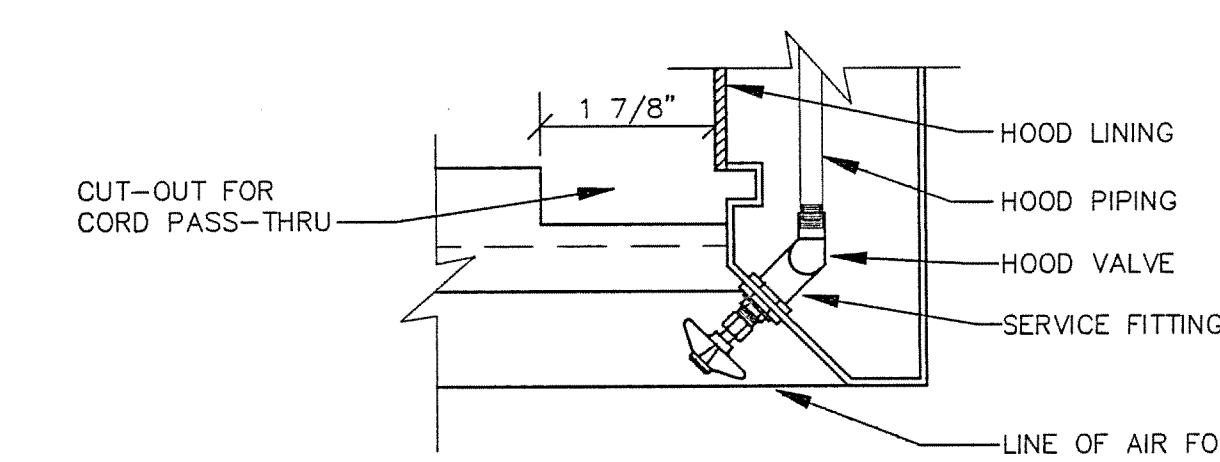


NOTE:
ELEVATION SIMILAR TO 6'-0" FUME HOOD ELEVATION

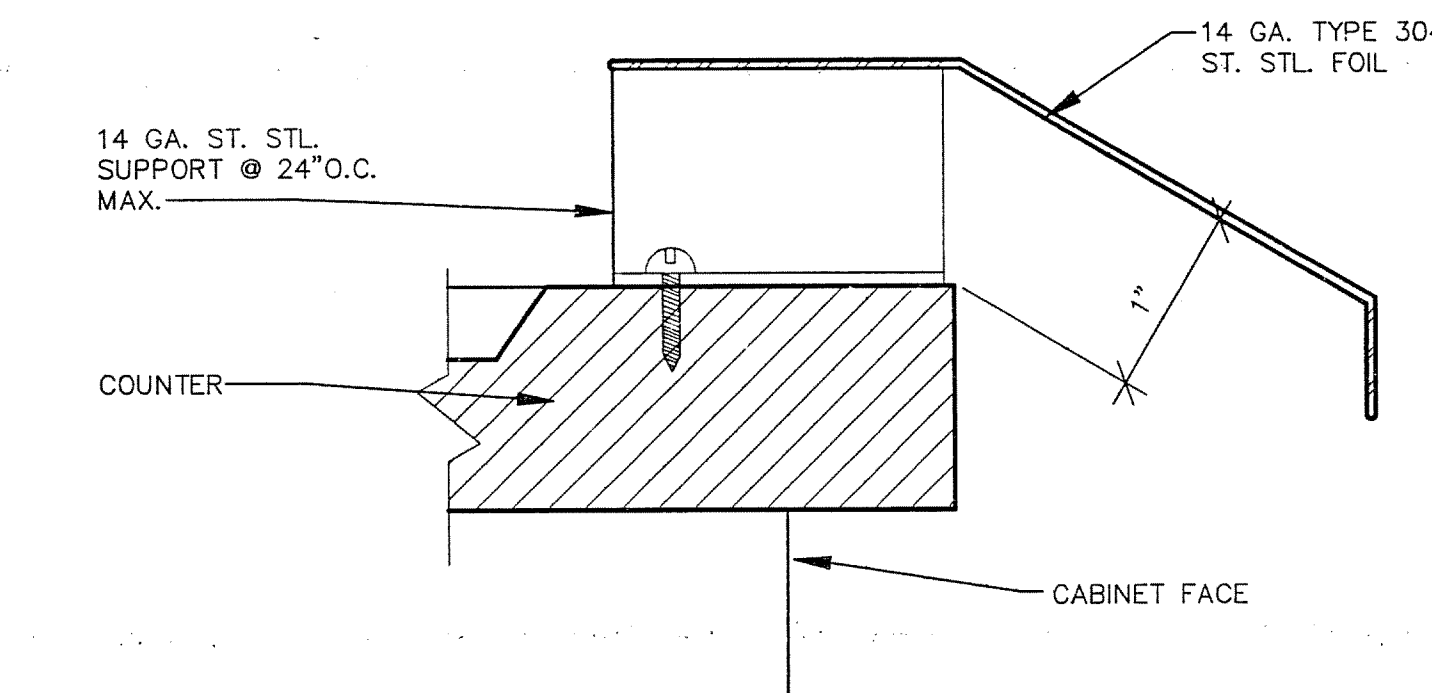
6 ISOTOPE HOOD SECTION
SCALE: 3/4" = 1'-0"



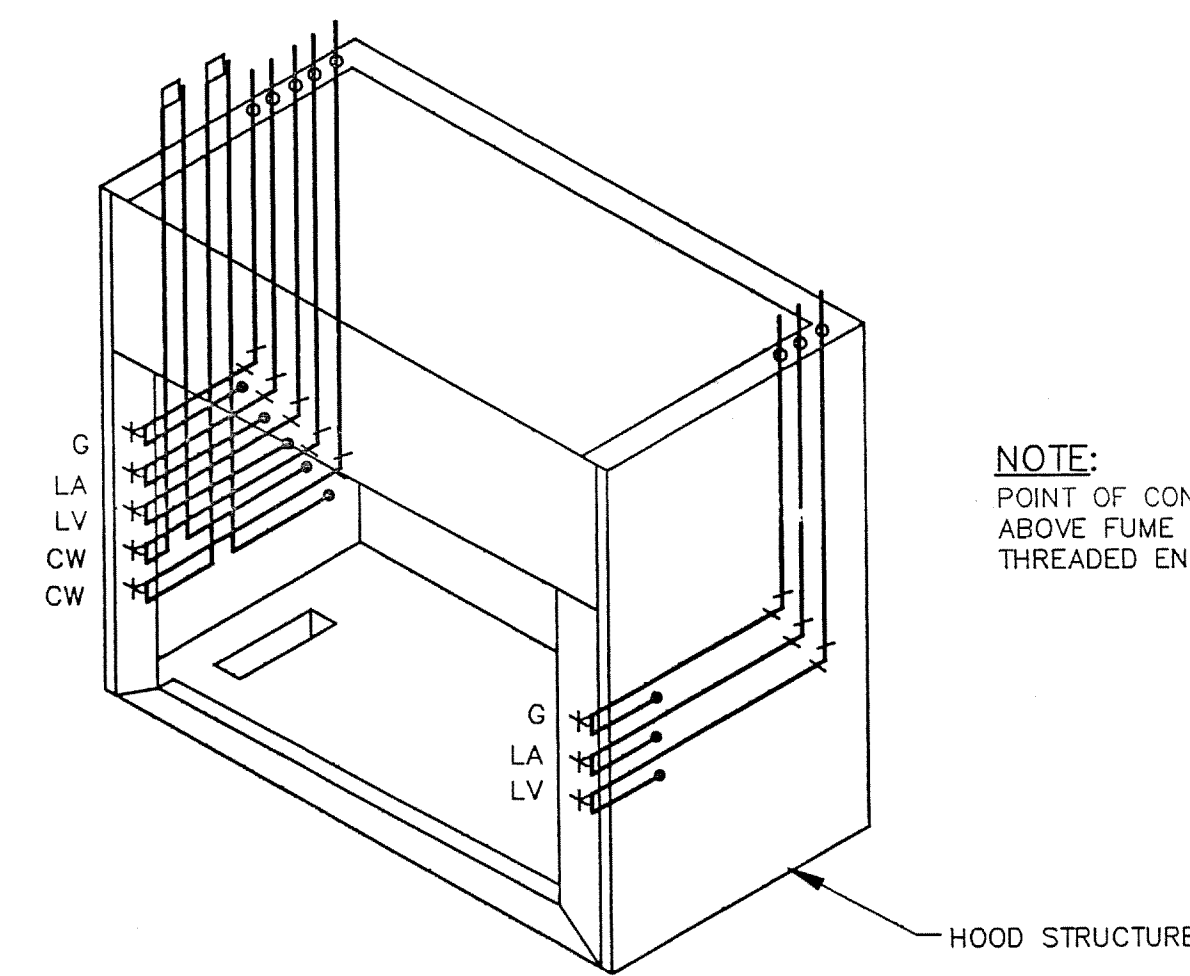
7 TYPICAL HOOD PRE-WIRING DIAGRAM
SCALE: NONE



8 TYPICAL MOUNTING OF PIPING VALVE
SCALE: NONE



9 AIR FOIL DETAIL
SCALE: NONE



ISOMETRIC

10 HOOD PRE-PIPING DIAGRAM
SCALE: NONE

NOTE:
VARIABLE VOLUME FUME HOODS SHALL HAVE AS MINIMUM SETTING WITH SASHES CLOSED, 30% OF THE AIR FOR THE FULL OPEN POSITION.

FUME HOOD SCHEDULE									
HOOD REF.	SIZE	FACE VELOCITY FT./MIN.	CFM	COLLAR DIA. *	QUANTITY		HEIGHT	SASH HORIZ. TRACKS	CONFIGURATION
					VERT.	HORIZ.			
V-5	5'-0"	100	1000	6"x20" (12")	1	-	30"	-	
V-5H	5'-0"	100	1000	6"x20" (12")	1	-	30"	-	+33" HANDICAPPED HOOD
HV-5	5'-0"	100	800	6"x14" (10")	1	3	30"	3	
V-6	6'-0"	100	1250	6"x25" (12")	1	-	30"	-	
V-6H	6'-0"	100	1250	6"x25" (12")	1	-	30"	-	+33" HANDICAPPED HOOD
HV-6	6'-0"	100	650	6"x14" (10")	1	4	30"	2	
IHV-6	6'-0"	100	750	6"x14" (10")	1	4	30"	2	ISOTOPE HOOD
WHV-6	6'-0"	100	780	6"x14" (10")	2	4	66"	2	WALK-IN HOOD
HV-8	8'-0"	100	800	6"x16" (10")	1	5	30"	2	